



PILE WIND 500 500kg MOTORISED HOIST

H500P-VX

Technical Specification Sheet

DESCRIPTION

The Jands H500P-VX is a packaged pile wind hoist and control system ready to be used "out of the box", featuring a minimum 500kg lifting capacity, provision for 6 x 5mm wire ropes and 14m of drift.

A rotary cam limit switch is directly coupled to the gearbox output shaft, providing end-of-travel and emergency over-travel limits.

An incremental position encoder within the rotary limit assembly is used to monitor safety functions and to provide positional control of the hoist via an optional Jands SAX-P1 control pendant.

The hoist is fitted with dual failsafe motor disc brakes, each brake rated for the full hoist load. The integral inverter brings the hoist to a safe controlled stop before applying the motor brakes.

Discrete brake contactors and an integral Emergency Stop circuit, combined with the redundant braking system, ensure that the highest levels of safety are achieved.

Control pendants (supplied separately) offer either simple up/down control (Jands HCPB-HX) or sophisticated programmable position and variable speed control (Jands SAX-P1).

An RJ45 I/O connector carries controller DC power, controller data, external enable and Emergency Stop signals.

The Jands H500P-VX is designed, built and tested to comply with the requirements for a serial hoist to AS1418.

OVERALL SPECIFICATIONS

Number of ropes	: 6
SWR type	: 5mm 7x19 steel core
Lifting Capacity	: 500kg
Maximum lift height	: 14m
Speed (Nominal)	: 8m/min
Speed (Maximum)	: 14m/min
Motor Type	: 4 pole AC Asynchronous
Motor Power	: 1100W
Control System	: 1100W VS Inverter
Braking system	: Dual Failsafe motor disc
Limit Switch	: 4P Rotary cam
Encoder	: Incremental
Power Supply	: 230V 50Hz 14.9A
Power Connector	: 15A 3 Pin
I/O Connector	: RJ45
Dimensions (6 line)	: 608(w) x 713(h) x 445(d)
Net/Shipping weight	: 100/110 kg

SUPPLIED ACCESSORIES

- JND-H500P-VX Hoist
- User Manual
- Universal Quick-Fix Mounting Bracket

OPTIONS

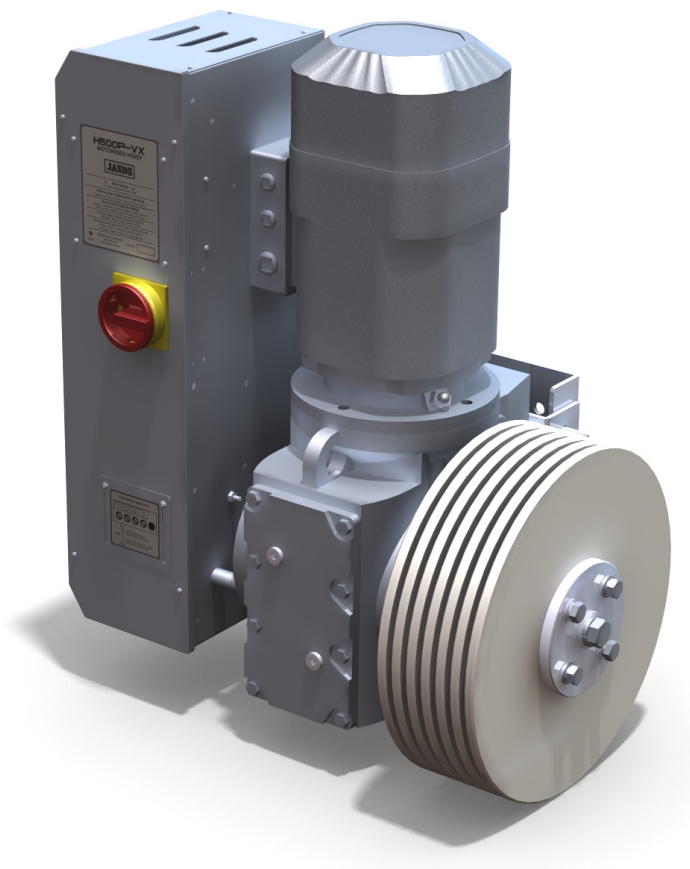
- JND-HCPB-HX Wall Mount Pendant Kit
- JND-SAX-P1 Controller

ORDERING INFORMATION

MODEL/PART	PART NUMBER
500kg Motorised Hoist	JND-H500P-VX
Wall Mount Pendant Kit	JND-HCPB-HX
Programmable Hoist Controller	JND-SAX-P1

FEATURES

- Single phase 15A supply
- Integrated control system
- On board Isolator
- Direct coupled limit switches
- Incremental position encoder
- Dual Fail-Safe motor brakes
- Regenerative DC braking
- Quick-Fix mounting bracket
- Optional slack wire detection and E-Stop management
- Optional Speed and Position controls via SAX-P1 Controller



ARCHITECT & ENGINEER'S SPECIFICATION

Mechanical

The motorised hoist shall consist of cast and machined aluminium plates designed to accommodate six (6) steel cored, 5mm steel wire ropes of 7 x 19 construction, and shall be of a diameter sufficient to accommodate 14m of wire rope plus 2 dead turns.

These aluminium plates shall be coupled via a keyed shaft and retaining bolts to a hollow shaft 148:1 ratio helical worm gearbox.

The gearmotor shall give a hoist capacity (WLL) of 500kg.

Dual, redundant failsafe motor input brakes shall be fitted, each rated for the hoist WLL.

A wall mounting plate shall be provided, allowing for installation of the plate prior to installation of the hoist.

The motorised hoist shall be designed, tested and built as a serial hoist in accordance to AS1418.

The motorised hoist shall be the Jands H500P-VX

Electrical

The motorised hoist shall be powered by a 1100W, 4 pole AC asynchronous motor, driven from an integral electronic inverter drive with a capacity of 1100W.

The hoist shall be powered from a single phase, 230V 50Hz 15A supply and shall be fitted with a captive flexible supply cord fitted with a 3 pin plug to AS3112:2004.

A 4 pole rotary limit switch, directly coupled to the gearbox output shaft, shall provide both service and over-travel limit functions to AS1418.1:2002.

The limit switch assembly shall be fitted with a quadrature type incremental encoder. This encoder shall provide a tachometer signal to a control unit which monitors the limit switch coupling and performs a primary brake test of the hoist.

The motorised hoist shall be fitted with a lockable "Drive Off" type control isolator.

A choice of optional wall mount pendant controllers shall connect remotely to the RJ45 I/O connector.

These optional pendant controllers shall provide either simple Dead-Man action Up/Down pushbuttons, or programmable speed and position controls.

Terminals and cable entry shall be provided for the connection of an external slack wire detector.

An internal Emergency Stop circuit and a discrete "enable" circuit shall be accessible via the RJ45 I/O connector.

The motorised hoist shall be the Jands H500P-VX.

